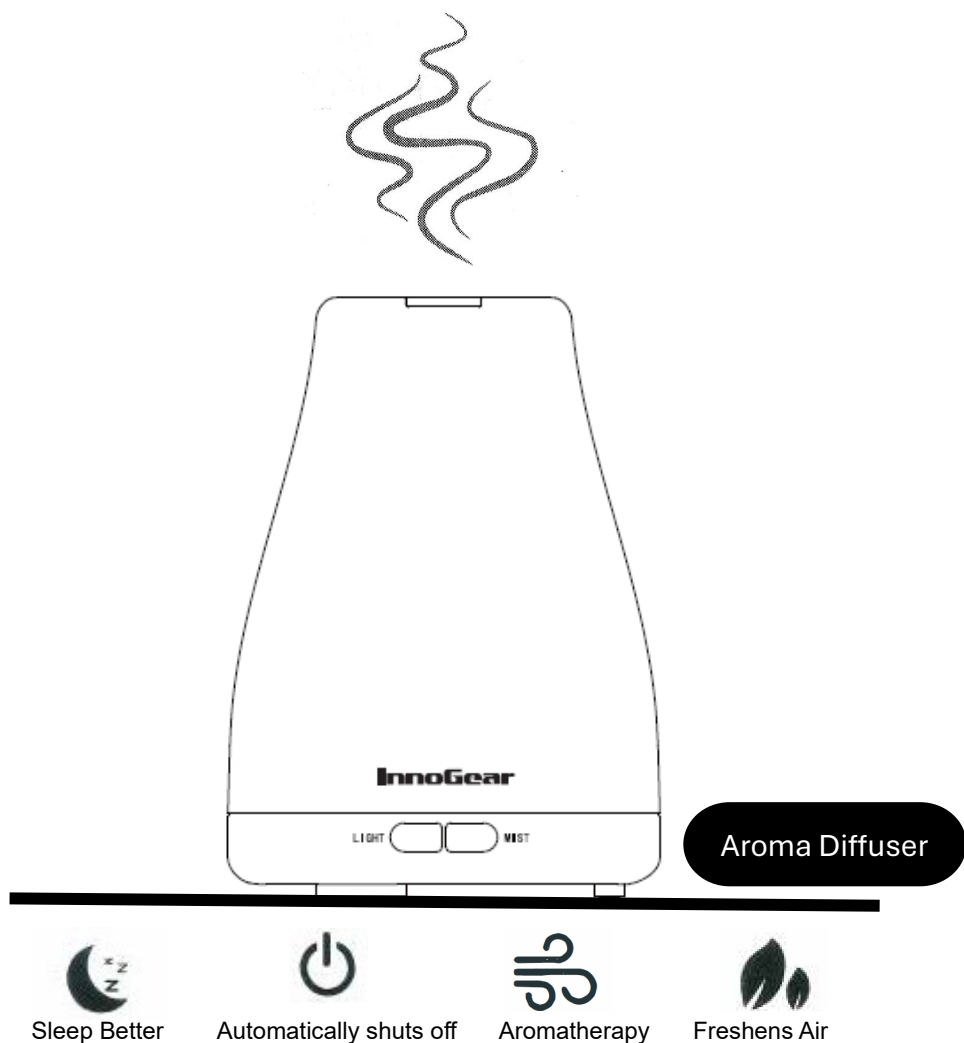


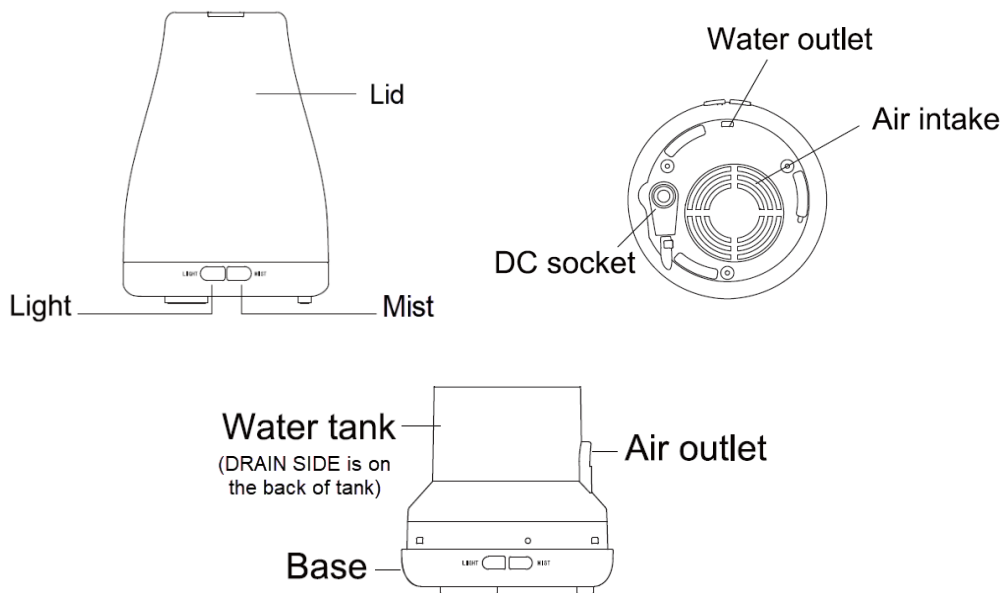
# InnoGear

## AROMATHERAPY DIFFUSER

User Manual (v2.1)



## PARTS LIST



## SPECIFICATION

Size	Ø 98mm x H 135mm
Input	AC 100-240V 50/60Hz
Output	DC 24V
Power	Approx. 10W
Water tank capacity	100ml
Included accessories	Power cord and user manual
Frequency	2.4Mhz

## FEATURES



### Diffuser

Add 1-3 drops of your favorite essential oil to help get rid of unpleasant odors around your home.



### Humidifier

Use without essential oils to add moisture to your environment. (Helps with dry/chapped skin, chapped lips, and even dry sinuses.)



### Colorful LED Night Light

This diffuser comes with an ambiance light which can be set to cycle through colors or stay on a specific one. Great for your bedroom! Helps you achieve a healthy and restful sleep.



### Desktop Decoration

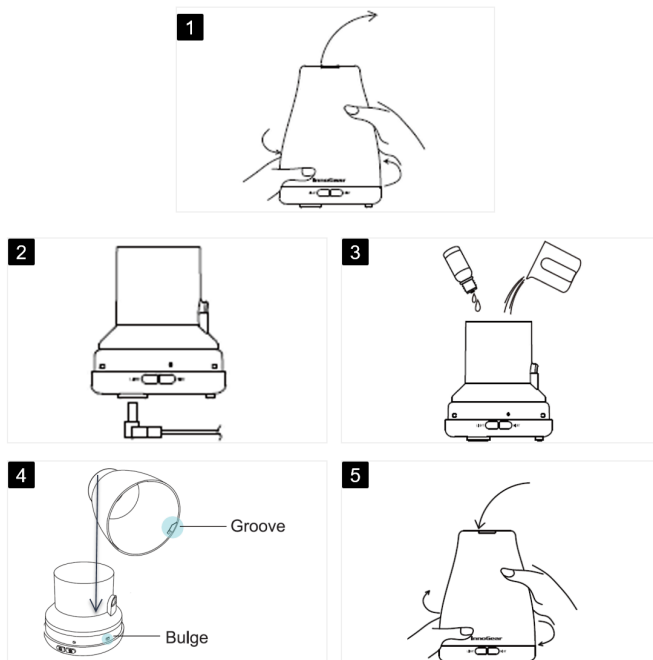
Its gorgeous design lets it fit in with any décor style.



## TIPS BEFORE USING YOUR DIFFUSER

- Make sure the power cord is completely dry before plugging it in.
- Do not exceed max level when adding water.
- Do not power on the diffuser while the lid is removed.
- Do not use this device in a highly humid environment.
- Do not remove the lid while the diffuser is on.
- Use with a mix of essential oil and water. **NEVER** use with only essential oil.
- Only use with 100% pure essential oil. **DO NOT** use a low low-quality oil that contains chemicals, spices, or impurities.
- Clean the diffuser regularly. We recommend cleaning every third usage.
- If the diffuser runs out of water, it will automatically shut off.
- Stop using the diffuser if the power cord is damaged or if the outlet is loose.

# USING YOUR DIFFUSER



**1** Twist the lid counterclockwise and lift.

**2** Plug the included power cord into the DC socket underneath the base.

**3** Add water (no more than 3oz/100ml) and 2-3 drops of essential oil into the water tank.

**4** Make sure the bulges on the base are aligned with the grooves on the lid.

**5** Put the lid back on and turn the lid clockwise to lock it. The **InnoGear** should be right above the **MIST** and **LIGHT** buttons.

Created by P.Vega  
Friday, October 9, 2024

Made with  
TechSmith Snagit®

## MIST

- Press the **MIST** button once to have a continuous stream of mist. The LED indicator will be **RED**.
- Press the **MIST** button again to switch to Intermittent Mode (Deploys mist for 30 seconds in 30 seconds intervals.) The LED indicator will be **GREEN**.
- To turn off the diffuser, press the **MIST** button for 3 seconds.

## LIGHT

- Press the **LIGHT** button once to automatically cycle through the assorted colors.
- Press the **LIGHT** button again to stay on the color currently on display, press again to manually cycle through the available colors.
- Hold the **LIGHT** button for 3 seconds to turn off the light.

**NOTE:** Turning the LIGHT off does not turn off the MIST function if it is on. To turn off both features at the same time, hold the **MIST** button for 3 seconds.

# MAINTENANCE

**NOTE:** We recommend you clean the diffuser after every 3<sup>rd</sup> usage.

- Unplug the diffuser and pour out the remaining water from the **DRAIN SIDE**.
- Add a small amount of water and gently wipe the diffuser using a soft brush or cotton swab. Dry the diffuser with a soft cloth.

## NOTES:

- If the diffuser is knocked or tipped over while in use, shake the unit to drain the water inside the diffuser and place it in a well-ventilated area to air dry.
- If the diffuser will not be in use for a long time, keep it clean and dry.

## TIPS

- To extend the lifespan of the diffuser, **do not use mineral water**.
- **Do not go over the MAX line when filling up the water tank.**
- **Do not remove the lid while the diffuser is in use.** Turn off the diffuser first. Otherwise, water and oil can fall outside of the water tank. Oil landing on the inside of the lid can cause it to become difficult to remove later.
- The amount and intensity of the mist can change while in operation, this is normal.
- Many factors can affect how the mist can appear, such as: water type, humidity, water level, temperature, and air currents.

## TROUBLESHOOTING

PROBLEM	CAUSE	SOLUTION
Does not turn on	Incorrectly plugged in	Unplug the diffuser, check the power cord and outlet for any issues, plug back in.
	Low water level	Add more water but <b>do not exceed the MAX line</b> .
No mist or low mist	Water level issue	Add right amount of water ( <b>Do not exceed MAX line</b> )
	Dust on ultrasonic film	Clean the diffuser according to the <b>MAINTENANCE</b> section.
	Lid installed improperly/fell off	Check if the lid is installed properly. Refer to the <b>USING YOUR DIFFUSER</b> section.
	Dust in the air intake	Clean the air intake.
Water leakage	Lid not properly installed	Check if the lid is installed properly. Refer to the <b>USING YOUR DIFFUSER</b> section.
	Have not wiped steam water from inside the lid	Wipe steam water from lid after each use, make sure the lid is completely dry before refilling the water tank.
	Low temperature or high humidity	Move the diffuser to a well-ventilated area
	Crack on the bottom of the water tank	Contact us for a free replacement with proof of purchase and of the damaged water tank.
Bad/strange smell	Did not dry the unit before storage	Empty the water tank and store in a dry area while not in use.
	Mixed scents	Clean the diffuser first before changing to another scent of essential oil. Refer to the <b>MAINTENANCE</b> section.
	Low quality essential oil	Only use this diffuser with 100% pure essential oils.

## Q'S & A'S

**Q Can't remove the lid?**

**A** Make sure the **InnoGear** logo is right above the **MIST** and **LIGHT** buttons and the grooves inside the lid are aligned with the bulges on the base. Twist counterclockwise to remove.

**Q Why is the bottom of the base melted after a few months of use?**

**A** Impure essential oils can be corrosive to plastic, only use 100% pure essential oils. Contact us for a replacement/refund.

**Q Why can't I smell anything?**

**A** The strength of the scent varies on the types of essential oils used. Choose a strong scented oil and do not place the diffuser near an air conditioner, fan, or window.

**Q Why is the diffuser not emitting a stronger mist?**

**A** The diffuser has been properly optimized to emit enough mist for the body to absorb. Also, the water level in the tank can affect the intensity of the mist. Refill the tank according to the given instructions.

**Q What is your warranty policy?**

**A** **InnoGear** stands behind every product we sell. All our products come with a 1-year warranty.

## AFTER-SALE SERVICE

If you have any questions, please feel free to contact us through our **Amazon Seller Page**.